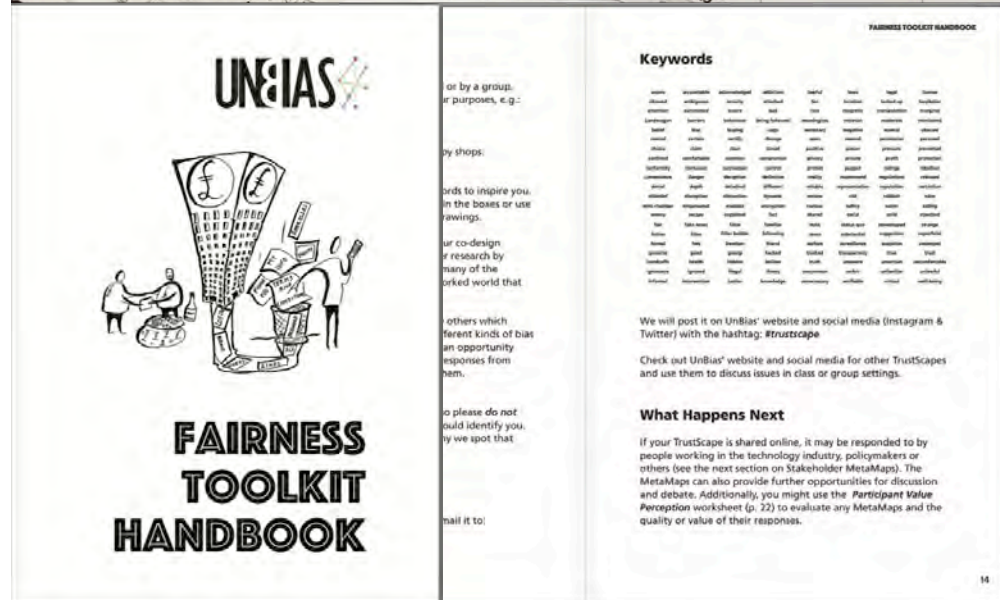
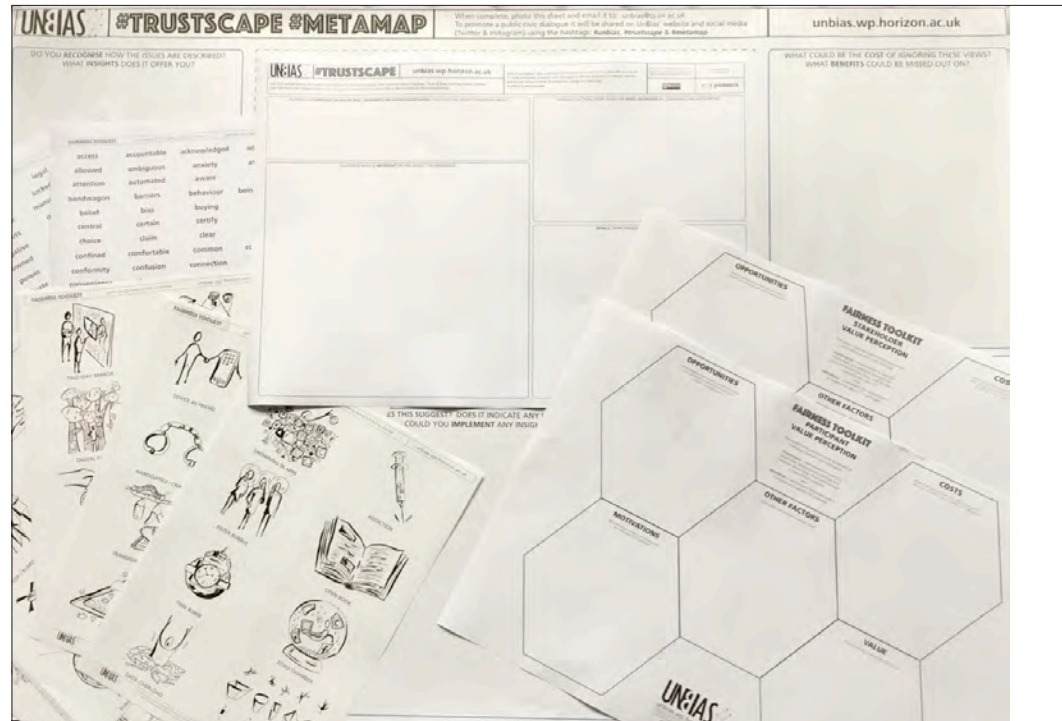


# Giles Lane – Portfolio

gileslane.net • proboscis.org.uk | giles@proboscis.org.uk



## UnBias Fairness Toolkit

UnBias was a 2 year research project exploring bias, trust & fairness in algorithmic systems, in collaboration with the universities of Nottingham, Oxford & Edinburgh. The toolkit promotes awareness of algorithms, trust, bias and fairness and aims to stimulate a public civic dialogue about their role in our society.

Funded by EPSRC | UK Research & Innovation

<http://proboscis.org.uk/projects/unbias>



# Giles Lane – Portfolio

[gileslane.net](http://gileslane.net) • [proboscis.org.uk](http://proboscis.org.uk) | [giles@proboscis.org.uk](mailto:giles@proboscis.org.uk)



## TK Reite Notebooks

A collaboration with anthropologist James Leach (CREDO/University of Western Australia) and villagers of Reite, Madang Province, Papua New Guinea to co-design and create hybrid digital/physical forms for transmitting Traditional Environmental and Cultural Knowledge to future generations, based on bookleteer.

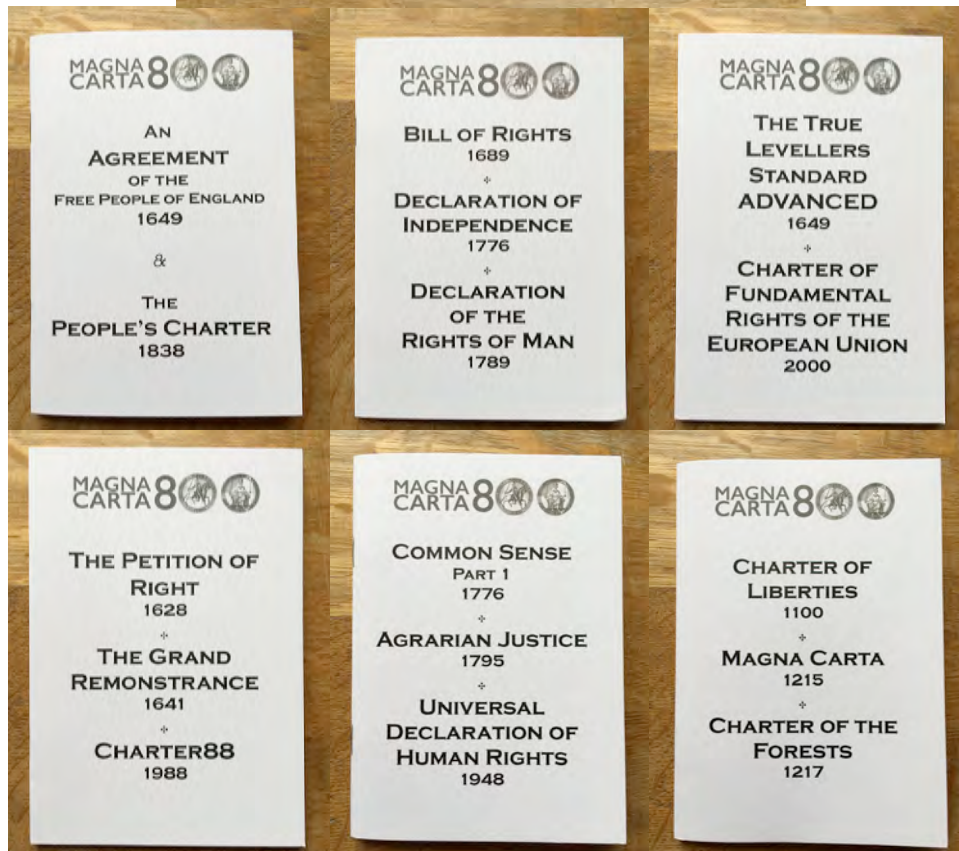
Funded by the Christensen Foundation (USA).

<http://proboscis.org.uk/projects/tk-reite-notebooks>



# Giles Lane – Portfolio

gileslane.net • proboscis.org.uk | giles@proboscis.org.uk



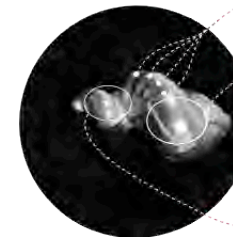
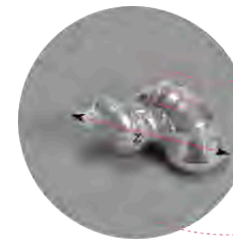
## Magna Carta

A part work of 6 books published monthly (January-June 2015) to coincide with the 800th anniversary of the signing of the Magna Carta. The selected texts juxtapose historical documents from 1100 to 2000 that demonstrate the enduring demand for liberty and justice that are associated with Magna Carta. Selected by Giles Lane and distributed through *the Periodical*, a Proboscis project.

<http://bookleteer.com/collection.html?id=24>

# Giles Lane – Portfolio

gileslane.net • proboscis.org.uk | giles@proboscis.org.uk



- 1) A deduced measure of the quality and length of sleep affects the surface pattern scaling of the shell
- 2) The average diastolic pulse affects the overall length of the shell (z)
- 3) The number of steps walked per day defines the number of growth segments ( shell rotation steps )
- 4) A measure of anxiety introduces a growth disturbance on the exterior shell pattern
- 5) A measure of air pollution affects the scaling (& length) of the recurring growth disturbance

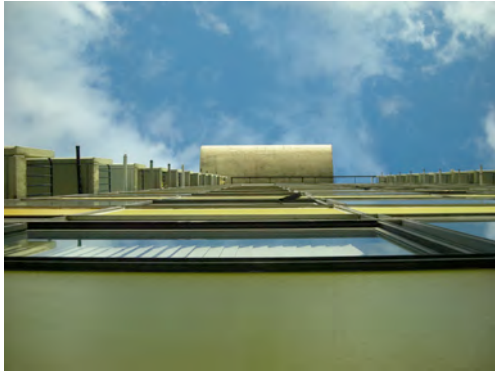
## Lifestreams : tactile poetry

Data-generated objects – *lifecharms* – were 3D printed in various materials (nylon, glass ceramic, silver, steel etc) using a custom algorithm to transform personal biosensor health data into tangible objects. A collaboration by Giles Lane and Stefan Kueppers (Proboscis) with Philips Research, Cambridge. Commissioned by Futurecity for Anglia Ruskin University's *Visualise* public art programme (2012).  
<http://proboscis.org.uk/tag/lifestreams>



# Giles Lane – Portfolio

gileslane.net • proboscis.org.uk | giles@proboscis.org.uk



What does the river mean today?  
The tension between the city and river.  
The city imposing itself, encroaching on the river.  
But this is not how it is presented, the city is afraid of the river, defence, the possibility of major flooding.  
The city denies nature.  
The gaps and stairs linking the river to the city.



By Sound wall at Diana Memorial Garden  
<http://boo.fm/b234700>



In the city. A simple navigational problem.



## City As Material

A series of 5 collaborative urban exploration and bookmaking events held in Autumn 2010. 10 books were made and shared via [bookleater.com](http://bookleater.com), with a special edition printed of 50 case-bound copies.

<http://proboscis.org.uk/2560/city-as-material-limited-edition-set>

# Giles Lane – Portfolio

gileslane.net • proboscis.org.uk | giles@proboscis.org.uk



## Being in Common

A public art commission exploring "the Art of Common Space" resulting in site specific temporary installations in Gunpowder Park, Waltham Abbey (Spring 2009). A Proboscis project by Giles Lane, Alice Angus, Orlagh Woods & Karen Martin.

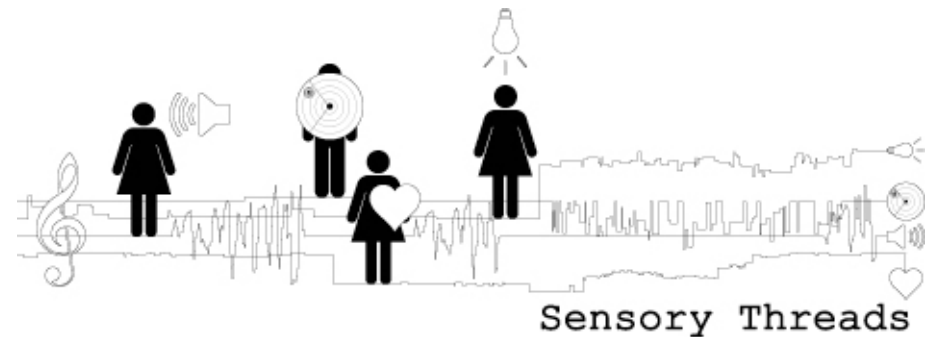
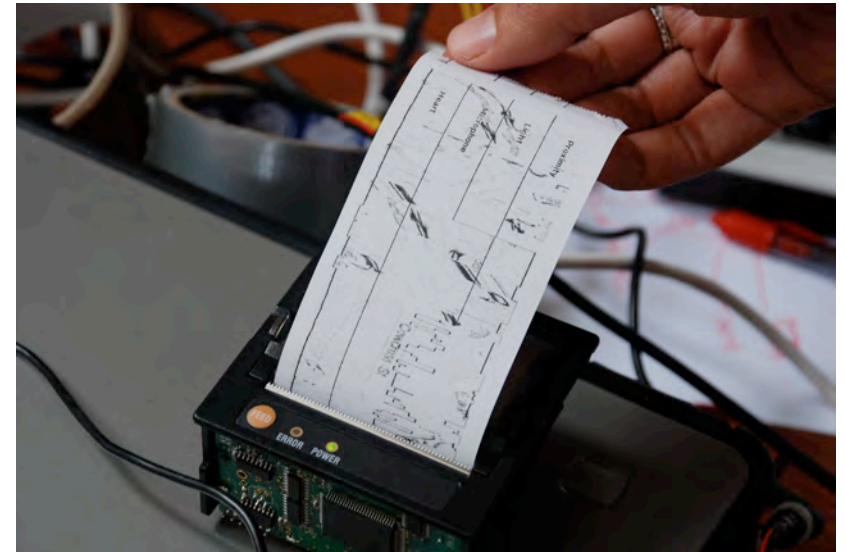
Commissioned by LANS for Lea Valley Park Authority.

<http://proboscis.org.uk/beingincommon/>



# Giles Lane – Portfolio

[gileslane.net](http://gileslane.net) • [proboscis.org.uk](http://proboscis.org.uk) | [giles@proboscis.org.uk](mailto:giles@proboscis.org.uk)



## Sensory Threads

A creative research project led by Proboscis as part of the CREATOR Digital Economy Research Cluster in collaboration with Mixed Reality Lab (Uni. Nottingham), Centre for Digital Music (Queen Mary University of London); Birkbeck College & University of Southampton Business School. Combining collective wearable environmental sensing for 4 people with live generated audio soundscapes from the data and remote audience engagement. Premiered at the Science Museum, London (2009) and presented at CHI 2010.

Funded by RCUK Digital Economy Programme (2008-09).

<http://proboscis.org.uk/sensory-threads/>

# Giles Lane – Portfolio

[gileslane.net](http://gileslane.net) • [proboscis.org.uk](http://proboscis.org.uk) | [giles@proboscis.org.uk](mailto:giles@proboscis.org.uk)



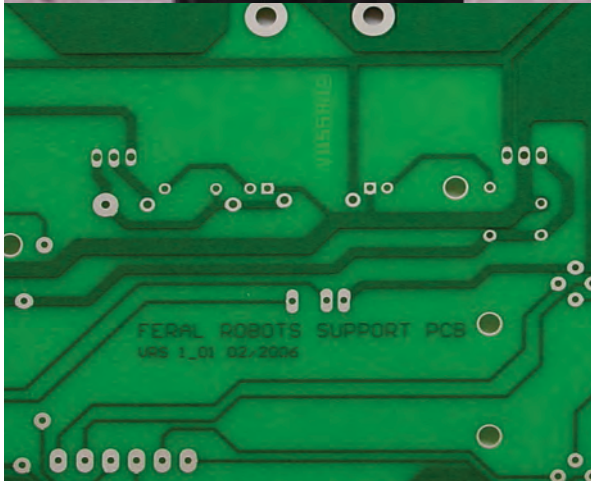
## Snout

Combining community-based practices of carnival costume creation with environmental sensing and data mashups with mapping and health data from National Statistics. Public event in Shoreditch in April 2007. A collaboration with Birkbeck University of London. Commissioned by Iniva, funded by the Esmée Fairbairn Charitable Trust. <http://socialtapestries.net/snout/>



# Giles Lane – Portfolio

gileslane.net • proboscis.org.uk | giles@proboscis.org.uk



## Robotic Feral Public Authoring (Feral Robots)

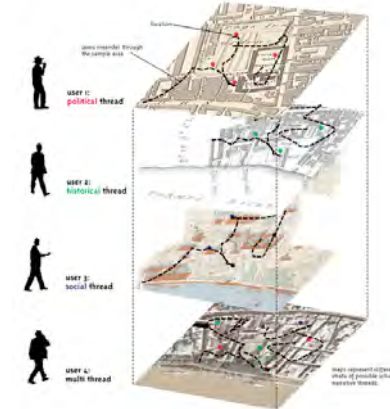
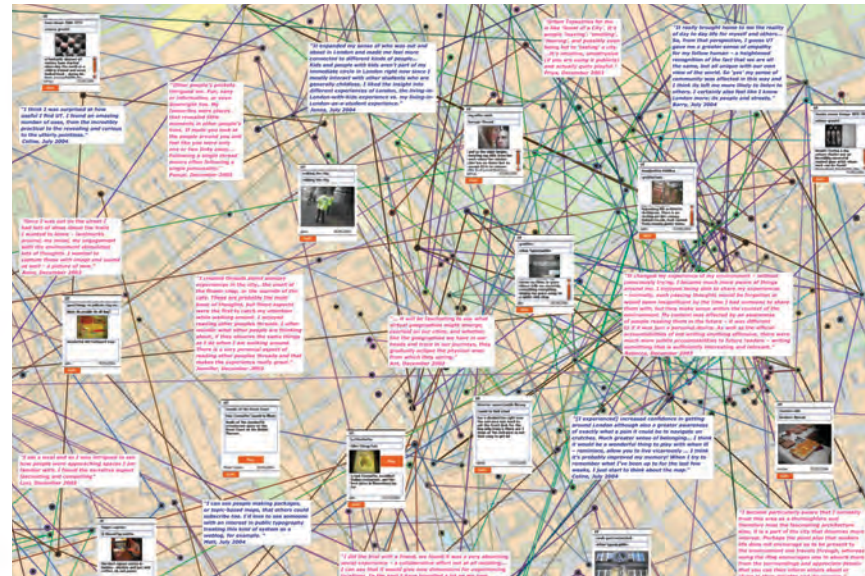
A collaboration between Proboscis, Australia/US artist-engineer Natalie Jeremijenko and researchers at Birkbeck College, bridging citizen science and environmental data capture with robot toy hacking and mobile mapping technologies. Funded by the EPSRC.

<http://socialtapestries.net/feralrobots>



# Giles Lane – Portfolio

gileslane.net • proboscis.org.uk | giles@proboscis.org.uk



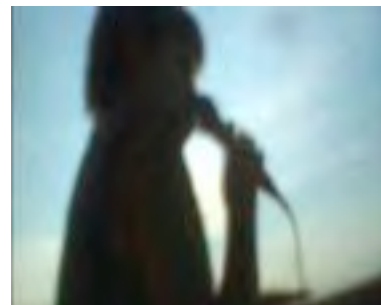
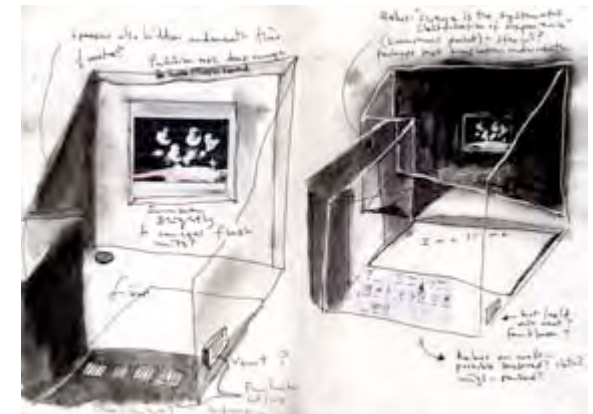
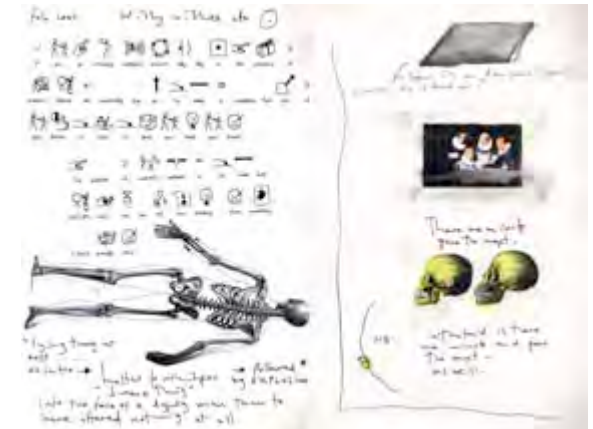
## Urban Tapestries

A groundbreaking action research project merging psychogeography with mobile phones and wireless internet. Partners included London School of Economics, Hewlett-Packard Research, Ordnance Survey, Apple and Orange/France Telecom R&D. Funded by the Dept of Trade & Industry, Arts Council England & Daniel Langlois Foundation (2002-04). <http://urbantapestries.net>



# Giles Lane – Portfolio

[gileslane.net](http://gileslane.net) • [proboscis.org.uk](http://proboscis.org.uk) | [giles@proboscis.org.uk](mailto:giles@proboscis.org.uk)



## Mapping Perception

A 5 year collaboration with filmmaker Andrew Kötting, Eden Kötting and neuro-physiologist Dr Mark Lythgoe (Institute of Child Health), exploring perception, ability and disability through the prism of brain dysfunction. Outputs included a 37 minute film, an environmental installation, book and CD-Rom.

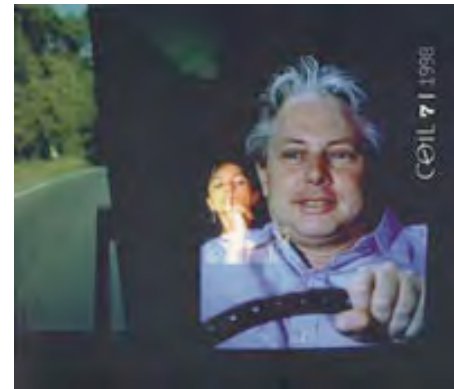
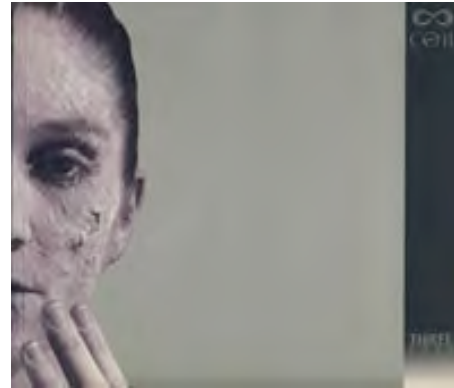
Funded by Nesta/Sciart Consortium, UK Film Council, London Production Fund, Calouste Gulbenkian Foundation and South East Arts (1998-2002).

<http://proboscis.org.uk/projects/mapping-perception>



# Giles Lane – Portfolio

gileslane.net • proboscis.org.uk | giles@proboscis.org.uk



## COIL journal of the moving image

A 5 year experimental publishing part work (10 issues) with over 130 original contributors work, from essays to artworks on and by practitioners, writers, theorists and others in the fields of artists film and video and the emerging field of electronic art (1995-2000).

<http://proboscis.org.uk/projects/coil-journal>